

# Congaree



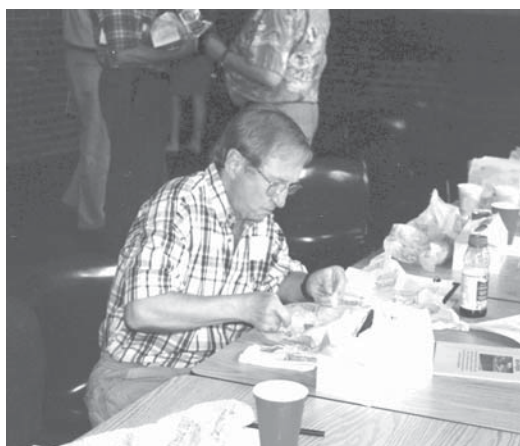
# Chronicle

January/February, 2005

Volume 28, Number 1



Above, Virginia Sanders joined USC students for celebration of Earth Day in 2004. Below, John Bracken, Winyah Group Representative, takes a lunch break at a recent Chapter ExCom meeting.



## The Year in Review . . . And a Look Ahead

### 2004 was Marked by Defensive Successes

by Dell Isham, Chapter Director

Creating is more inspiring than holding-the-line. Protecting our gains, however, is just as important. As we look back upon 2004 we recognize that we had to fight valiantly simply to stay even and to prevent bad things from happening to the environment.

Whether our message was being delivered before the legislature, in the courts, or in forums to shape public opinion, the Chapter protected the environment and maintained our position in the state.

The Chapter is using a variety of methods to educate the public. Chapter Director Dell Isham and Conservation Coordinator Virginia Sanders speak to schools, civic organizations and neighborhood groups. We use petitions and door-to-door canvassing too. The chapter has found success in meeting the public at the South Carolina Book Festival, the South Carolina State Fair, and numerous community events.

The success of any Sierra Club program is dependent on volunteers. The State Fair alone, for example, requires the participation and management of 60 volunteers. And thanks to members from throughout the state and from college students our State Fair outreach program has been a success every year.

### Political Success

One notable bright spot is in the political realm. More and more legislators and political candidates are seeking us out for advice and support. Increasingly local government officials want Sierra Club member participation on various citizen advisory committees. Sierra Club members are running for office and getting elected in greater numbers. Notably, chapter excom member Alonzo Frazier was recently elected to the Allendale County School Board.

Candidates for President, U.S. Senate, and 25 legislative seats were endorsed by the SC Sierra Club. While John Kerry and Inez Tenenbaum lost in South Carolina, 18 of the Sierra Club endorsed legislative candidates won their races.

Slowly environmental advocacy is evolving into a bi-partisan issue in the state. As a non-partisan organization, the Sierra Club will benefit from this trend. Election results have enforced the lessons

that we must be involved in primary elections, emphasize bi-partisanship, and describe our issues in ethical terms. It is more important for us to tell stories than it is to tell statistics.

### Strategic Planning Needed

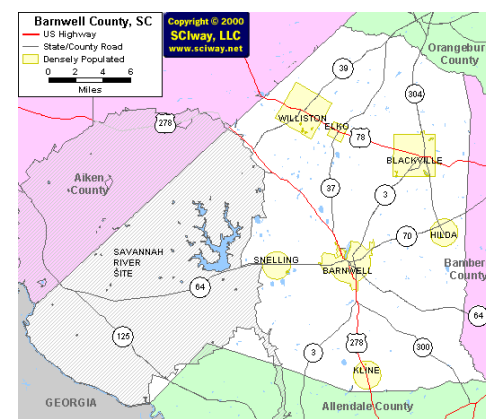
Membership numbers rebounded while fundraising and volunteerism held steady in 2004 compared to previous years. Dissatisfied with just staying even, the chapter leadership is calling for a strategic planning retreat early in 2005. The goal will be learn how to become a more effective organization and put together a plan to accomplish this goal.

The national organization has been experimenting with new forms of member involvement and the South Carolina Chapter has participated. National Delegate Bob Guild has led the (Continues on page 5.)

## Citizens Win Victory with Chapter Help

“For the past two years we have been pushing the Town of Williston, the federal Environmental Protection Agency and the state Department of Health and Environmental Control to clean up the contaminated area near Dixie-Narco and extend city water lines to the homes that are on private well water so that everyone will have access to clean safe drinking water,” announced Conservation Coordinator Virginia Sanders.

On December 13, 2004, a grant was approved to lay the water lines, *plus* pay for individual homes to be connected to the lines. It was a victory for the people of Williston, especially those who have attended meetings, fussed, cried, sweated and (Continues on page 2.)



## Inside

### 1-5: Conservation

2004 in review  
Williston victory  
Whooping cranes return to SC  
Conservation reserve program  
What you eat affects the sky  
Are you a tree hugger?

### 4-6: Club news

From the chapter chair  
ExCom report  
Planning retreat in March  
Regional leaders meet  
Donations

### 8: Outings and events

State outings



## Sierra Club, South Carolina Chapter

1314 Lincoln Street, Suite 211  
Columbia, SC 29201  
Mailing Address: P. O. Box 2388  
Columbia, SC 29202  
Phone: (803)256-8487  
Fax (803)256-8448  
E mail: [scsierra@earthlink.net](mailto:scsierra@earthlink.net)  
website: <http://www.sierraclub.org/chapters/sc>

**Chapter Chair:**  
Bob Guild,  
(803)252-1419; [bguild@mindspring.com](mailto:bguild@mindspring.com)

**Chapter Director:**  
Dell Isham

## Congaree Chronicle

Editor: Barb Postles,  
[bpostles@aol.com](mailto:bpostles@aol.com)

Views expressed in the *Chronicle* reflect the opinions of the individual authors and may not necessarily be official Sierra Club views and positions. The *Chronicle* welcomes articles, letters to the editor, photographs, and illustrations. The editors reserve the right to edit any material for clarity, style and length.

The *Congaree Chronicle* (ISSNO1645676) is published four times per year for the South Carolina Chapter of the Sierra Club, 85 Second Street, Second Floor, San Francisco, CA 94105. One dollar of annual dues pays for a subscription to this newsletter. Periodicals postage is paid at San Francisco, CA and additional mailing offices.

Send address changes to: Postmaster, P.O. Box 2388, Columbia, SC 29202. Include your membership number.

SUBMIT ARTICLES TO:  
Chapter Office--address and phone above.  
**NEXT DEADLINE: February 10**

## Advertising Rates and Terms

Full Page—\$250.00  
1/2 Page—\$150.00  
1/4 Page—\$ 80.00  
1/8 Page—\$ 45.00  
Business Card—\$25.00  
Classified Ads—\$1.00/word, 15-word minimum.

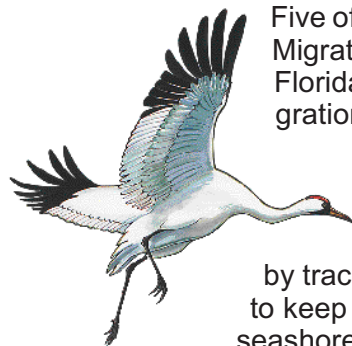
Rates are based on circulation of more than 5200 members across the state.

We reserve the right to refuse publication of ads. Paid advertisements contained in the *Chronicle* do not necessarily constitute endorsement, support, recommendation, or alliance with or for the party paying for the advertisement and the South Carolina Chapter of the Sierra Club.

For placement, contact the Sierra Club office at (803)256-8487.

# Conservation

## Whooping Cranes Return to South Carolina



Five of the endangered whooping cranes that are part of the Operation Migration effort to reestablish a migrating flock between Wisconsin and Florida have detoured to South Carolina on their first unassisted migration, the Associated Press reported on November 21.

Four of the birds were reported at the Cape Romain National Seashore and the other was spotted on the Savannah River. The birds are being tracked by radio signals from transmitters attached to them. The cranes haven't been watched by trackers, who are moving on ground and in air but far enough away to keep from disturbing the birds. Sadly, one of the four reported at the seashore was found dead, likely from a bobcat attack.

## Conservation Reserve Program Protects 213,415 Acres in SC

**By Erin Swails, Chapter volunteer**

The federal Conservation Reserve Program (CRP) provides financial incentives for farmers to establish long-term conservation practices on environmentally sensitive cropland, including lands in South Carolina.

Under the U.S. Department of Agriculture, the Commodity Credit Corporation (CCC) program provides annual rental payments and cost-share assistance for up to 50% of participant costs. Contracts run from 10 to 15 years. As of August 2004, 213,415 acres of farmland in South Carolina were protected under active CRP contracts. CRP payments in South Carolina from 1995 to 2002 totaled \$76.7 million.

In order to qualify, cropland must be planted in an agricultural commodity for four of the previous six crop years. As part of the selection process, eligible land is ranked according to an Environmental Benefits Index that considers benefits for wildlife, water quality, air quality, and the cost of implementation, as well as benefits that will likely endure beyond the contract period. Land that will provide significant environmental benefits if devoted to a specific conservation use is also given special consideration.

For example, with the establishment of Longleaf Pine Conservation Areas, over two-thirds of South Carolina qualifies. Many areas previously ineligible for CRP contracts now qualify. The Forest Service through the South Carolina Forestry Commission will provide the technical assistance and tree seedlings needed to establish tree cover on land approved for a CRP contract.

As well as providing important wildlife habitats, tree cover provides long-term benefits to the farmer by improving soil quality on the protected site. Trees improve soil nutrient balance by reducing unproductive nutrient losses from erosion and leaching. Trees improve soil structure, water-holding capacity, crop rooting volume, and increase biological activity in the soil by providing biomass and a suitable microclimate. Some tree species may actually increase nutrient input through nitrogen fixation. By reducing erosion and leaching, trees also improve the condition of nearby lakes, rivers, ponds, and streams.

For more information, or to apply for a CRP contract, contact the state Department of Agriculture or the state Forestry Commission.

## Williston Victory

(Continued from page 1.)

gone door-to-door to raise awareness. Sierra Club can be proud of the helping hand given to the community as a whole and to the families that were drinking contaminated water, probably for years.

Special thanks go to David Dorch for being the "bell-ringer" and sounding the alarm for years, often alone and without support. Finally he got the attention of county councilors, state legislators and everyone who has worked behind the scenes to help the community realize its dream.

"Thanks to everyone that joined us in this struggle for clean drinking water. We will need you again as we watch the cleanup activities in 2005 across the street from Dixie-Narco. The Sierra Club EJ Program will be there with you to see that the cleanup is complete," said Rita Harris, Sierra Club Environmental Justice Coordinator.

According to County Councilor Freddie Houston, work could start as soon as the end of January on setting the pipes in place.

# What You Eat Affects the Sky

By Mike Tidwell, Director, Chesapeake Climate Action Network

Few of us realize it, but the food we put in our mouths each day dramatically affects the global climate. The typical American diet requires the use of a staggering equivalent of 400 gallons of oil each year. That generates almost as much planet-warming CO<sub>2</sub> as the average U.S. car.

We all know cars cause smog and contribute to global warming. But our chicken nuggets? Our winter strawberries? Our Häagen-Dazs fudge swirl? You betcha. Our country derives almost all of its energy from fossil fuels--oil, coal, and natural gas--whose use generates millions of tons of CO<sub>2</sub> annually. And nearly one fifth of that energy is devoted in some way to food.

How? Virtually all of our food crops--those directly consumed by humans or diverted to meat production--are raised with petroleum-based fertilizers. We extract the nitrogen we need for plant stimulation from various petroleum products. This alone takes up 30 percent of our energy budget for food.

Then there's our complementary use of petroleum-based herbicides and pesticides, as well as diesel fuel and gasoline for combines, tractors, and other farm machinery. We also need fossil fuels to irrigate our crops before harvest and often to dry the same crops after maturity.

## Meat consumption and climate change

Our nation's great consumption of meat, eggs, and dairy products amplifies all of these energy needs many fold since roughly 80 percent of all corn and other grains grown in this country go to feed animals, not people. Not only does our annual per capita consumption of about 230 pounds of meat require an ocean of oil, it leaves us drowning in twice the government's daily recommended allowance of protein.

Once shipped from the farm, of course, much of our food is then refrigerated, processed, and packaged into everything from Pop Tarts to Atkins-approved microwave dinners. This requires enormous amounts of electricity, which means burning whole mountains of coal. Over half of our nation's electricity, after all, comes from the combustion of pulverized coal.

Finally, there's the runaway explosion in food transportation. Thanks to globalization, artificially low gas prices and massive government highway subsidies, the average kilogram of food in Maryland (and nationwide) travels at least 1500 miles from farm to plate. That's an increase of 25 percent just since 1980. The average prepared meal in the U.S. includes ingredients produced in at least five other countries.

In this modern food transportation system, wasted energy reaches absurd levels. For example, a lettuce farmer near Atlanta, Georgia who wants to sell to a Safeway in

Atlanta must first ship the lettuce 621 miles to Upper Marlboro, MD for inspection, then ship it back down to Georgia. This transportation not only consumes fossil fuel but takes up extra road space and leaves the lettuce less fresh!

It should be easy now to see that we're basically eating fossil fuels when we sit down to dinner in America, the equivalent of 400 gallons of oil per capita. Yet even people who consider themselves environmentalists rarely consider the impact of their food choices. A person who drives a trendy Toyota Prius hybrid car, for example, but who maintains a typical U.S. diet heavy on meats and processed foods, is actually generating twice the annual CO<sub>2</sub> from his diet than his car.

## Solution: Eat organic foods grown in your region

All of these diet-related impacts on our climate and natural environment could be dramatically and painlessly reduced if Americans took three easy steps. These are 1) buy locally raised foods whenever possible; 2) buy organic foods; and 3) reduce meat and dairy consumption.

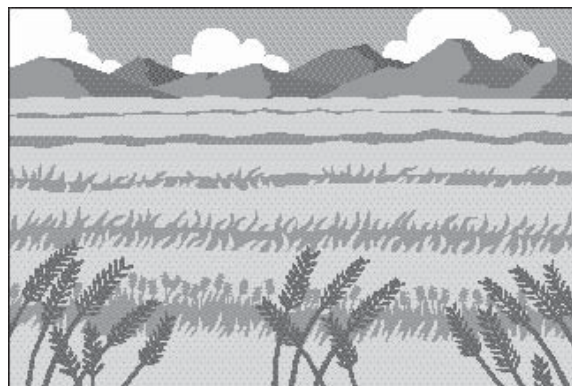
Thankfully, buying local food that has not been trucked thousands of miles gets easier every year. According to the U.S. Department of Agriculture, regionally based farmers markets with a wide variety of fruits and vegetables have grown from 300 in the mid 1970s to 3100 in America today. Such markets simultaneously decrease transportation inputs while increasing community interconnections. One study estimates that people have 10 times as many conversations at farmers' markets than at supermarkets. (Visit [www.ams.usda.gov/farmersmarkets/map.htm](http://www.ams.usda.gov/farmersmarkets/map.htm) for a farmers market near you.)

People across America can also buy directly from a specific farm nearest their home thanks to a practice called "community-supported agriculture (CSA)." For a set annual price, you essentially "subscribe" to a farm, receiving a standard weekly share of whatever the farm produces during the growing season.

A second important step, beyond buying locally, is to buy organically raised food. Organic agriculture eschews petroleum-based fertilizers, herbicides, and pesticides, relying instead on manure and plant-based fertilizers and reducing losses to insects by building healthy soils and planting a wide diversity of crops.

On average, organic farms use 37 percent less energy than conventional farms. Also, unlike soils rendered nearly biologically lifeless from petroleum inputs, organic soils are full of plant matter and various biological processes that naturally absorb carbon dioxide out of the atmo-

sphere. According to a 23-year study by the prestigious Rodale Institute, one acre of organic crops "sequester" as much as 3,700 pounds per year of CO<sub>2</sub>, the world's leading greenhouse gas. So organic food consumers fight climate change with every meal they eat.



Both fresh and processed organic foods are now widely available in this country, including at many chain supermarkets. Just as encouraging, Cuba, a nation whose life expectancy is actually longer than the U.S., has made a nearly total national switch to organic agriculture since 1991, disproving previous criticism that modern organic practices could not feed entire nations at affordable prices.

## It's easy to cut down on meat

The last critical step in the food/energy equation is reducing one's consumption of animal products. Meat, eggs, and dairy products are high-energy, high-impact foods. It takes 40 pounds of grain to produce one pound of beef and every kilocalorie of eggs produced in America requires 39 kilocalories of energy. Simply put, America could feed most of Africa with the grains we feed to livestock.

A vegetarian diet also dramatically reduces your risk of heart disease, the nation's number one cause of death. You can choose to make the vegetarian switch gradually thanks to a host of great vegetarian "meats" now on the market, from veggie burgers to soy sausage to chicken nuggets.

Here's the bottom-line good news: By making the switch to mostly regionally raised, organic food--including savory vegetarian meat substitutes--each American can reduce his personal food greenhouse gas budget by at least 60 percent. That's from around 400 gallons of oil equivalent each year to around 160.

With even the oil industry-friendly Bush Administration now openly admitting that fossil fuels are disrupting our life-giving global climate, and with a full 17 percent of U.S. energy use now devoted to food, it's clear we'll never solve the climate crisis with wind farms and hybrid cars alone. We must--and obviously can--cultivate and consume "clean-energy" food, grown close to home for the benefit of the whole world.

## Are You a Tree Hugger?

The Sierra Club booth at the 2004 South Carolina State Fair was a great success! During the those ten days, Sierra Club members from all over the state, University of



South Carolina students, S C Wildlife Federation employees, and numerous others staffed the booth, distributed materials, answered questions, and just showed good Southern hospitality! Many thanks to all our wonderful volunteers!

Fairgoers who stopped by the booth were asked to take the Sierra Club Water Conservation test, a thirteen-question survey that asked about various day-to-day activities relating to water conservation. Depending on the number of wrong answers, the test taker was labeled as a *Tree Hugger*, *Conscientious Citizen*, *Fair Weather Environmentalist*, *Wastrel*, or *one who uses more than their fair share of the planet*.

During the fair nearly two hundred people took the test. Below are the overall results of those responses as well as a copy of the actual test. If you haven't already done so, take a quick second to fill out the survey and find out what your environmental score is. You may be surprised!

A = "Tree Hugger" and proud of it--26%

B = Conscientious Citizen--36%

C = Fair Weather Environmentalist--23%

D = Wastrel--9%

F = You are using far more than your fair share of the planet--6%

### Yes or No

1. I bathe in a shower (not a bath tub) only once per day.
2. I turn off the hot water heater when I go on vacation.
3. I turn off the water faucet when brushing my teeth or shaving.
4. I have regulators installed on showerheads to reduce water usage.
5. I make sure detergents/chemicals do not run down storm drains.
6. I have reduced the water flow in toilet through regulator or device.
7. I avoid pouring toxic chemicals and grease down the drain.
8. I do not purchase scented, imprinted toilet paper.
9. I use natural landscaping to limit water usage and pesticides.
10. I grow or buy organically produced foods.
11. I avoid washing clothes before they need it.
12. I run the dishwasher only when it is full.
13. I'm a member or would like to become a member of Sierra Club.

### Score = number of "yesses"

- 1-2 wrong = "Tree Hugger" and proud of it.  
3-4 wrong = Conscientious Citizen  
5-6 wrong = Fair Weather Environmentalist  
7-8 wrong = Wastrel  
9-12 wrong = You are using more than your fair share of the planet)

## Scientists: 2004 the Fourth Hottest Year On Record; Sierra Club: Bush Fiddles

Statement by Dan Becker, Director, Global Warming, Sierra Club:

"On December 15, the Geneva-based World Meteorological Organization (WMO) reported that 2004 is on track to be the fourth-hottest year since record-keeping began in 1861. The WMO added that global warming trends will lead to increased extreme weather events.

"While the Bush administration continues to deny the seriousness of global warming, temperatures continue to rise and 2004 joins the 10 warmest years on record - all occurring since 1990 (1990, 1991, 1995, 1997, 1998, 1999, 2001, 2002, 2003, and 2004.) Today's WMO announcement is further evidence reinforcing the scientific conclusion that global warming will lead to increased habitat loss, sea level rise, and shifting weather patterns. Sir David King, the British government's top scientist, called global warming 'more serious even than the threat of terrorism.' In contrast to the actions of our leading trading partners and the warnings of the world's leading scientists, the Bush administration's approach to global warming ranges from ostrich-like to flat earth.

"Meanwhile, states are taking the initiative in attacking global warming. California's recently passed Pavley Law will require automobile makers to reduce global warming emissions from new cars and light trucks beginning in 2009. The Pavley Law is a big step in the right direction because it delivers clean car choices for consumers, and encourages cost-effective, currently available technology to reduce global warming emissions. Seven Northeastern states plan to implement California law when it is finalized, and Canada is considering adopting the measures.

"There is more good news. We have the solutions today to curb global warming emissions. By using cost-effective technology, we can slash greenhouse gas emissions from cars, pickup trucks, and SUVs. Using this technology can also wean ourselves from our dangerous oil dependence. We can use energy efficient technology to cut the energy use of lighting, heating, cooling and industrial processes. Finally, we can replace dirty, coal fired power plants with clean, renewable energy sources like wind, solar power and cleaner-burning natural gas.

"It's time for the Bush administration to take its head out of the sand and put currently available, cost-effective solutions to work against the problem of global warming."

## From the Chapter Chair....

### Let's Each Commit to Face the Challenges

by Bob Guild

In many cultures over the course of human history the celebration of the Winter solstice has served to remind us that the lengthening days ahead will again bring light, warmth and a green Spring. So too should we in the Sierra Club look ahead to days when our values of respect for the natural world and the health of all living creatures will again guide our Nation's leaders. In accepting the Chairship of the South Carolina Chapter, I am humbled in facing these difficult challenges but heartened by the resolve of the many talented and committed Club members who will lead this effort.

To meet these challenges we must work to build the Club and our capacity to wage the fight for conservation. We must recognize the unprecedented threats we face such as nuclear waste dumping, destruction of isolated wetlands and uncontrolled sprawl development. We must also build on our strengths including the many bipartisan victories in key legislative races, a strong environmental litigation effort, and talented Chapter staff, including strong legislative advocacy.

In the year ahead the South Carolina Chapter will increasingly depend on the efforts of our own membership to sustain our work. As the national Club reduces its level of conservation funding after the 2004 election peak, we will bear a heavier burden locally to support our critical work. While your financial support for the Club is more important than ever, your active engagement in the Club's conservation work will be essential. The Chapter is undertaking a rigorous and exciting strategic planning process in which broad participation by Sierrans from across the State is important for our success. Likewise, the Club's effectiveness in its conservation advocacy depends on your active efforts.

The challenges of these darkest days bring us closer together around that same campfire which warmed our earliest ancestors. Let's commit to each other to face the challenges together.



# Club News

## Frazier, Guild, Miller, top ExCom ballot

Alonzo Frazier, Bob Guild, and Vida Miller were the top vote getters among five candidates running for three at-large positions for the Chapter Executive Committee (ExCom).

Guild has served as the chapter's National Delegate and Strategic Planning Committee Chair in the last year. Miller, a State Representative from Georgetown



At-large members elected to the ExCom for 2005 are, from left, Alonzo Frazier, Bob Guild, and Vida Miller.

County, was the club's Outstanding State Official in 2003, and Frazier also was recently elected to the Allendale County School Board. Losing candidates were incumbent John Clark and longtime member Jack Seitz.

On December 4, Guild was elected ExCom chair. He said

he wanted to see volunteers concentrate on the basics of the organization, such as conservation, grassroots lobbying, and outings. Management of the organization should be left to the chapter director with oversight from the Personnel/Steering Committee.

Outgoing chair, Glenn Didyoung, who chaired for two years, did not seek reelection. He noted that he is leaving his post with a list of legislative and political victories, an organization that is out of debt, and an increase in membership.

Guild, immediately upon election, appointed members to the Personnel/Steering Committee and Budget Committees. He said other appointments would be made in January. On the Personnel/Steering Committee is Eric Thompson, Chris Kempton, Susan Corbett, Barb Postles (ex officio), Didyoung, and chaired by Guild.

The Budget Committee will consist of Malcolm Kudra, Ed FitzGerald, Thompson, Postles, Didyoung, and chaired by Guild. Kempton is the Conservation Committee Chair, with other members to the committee to be appointed later.

Virginia Sanders, conservation staffer, was recognized for her fine work over the last three years. The grant supporting were employment concluded on December 15. She said she would be taking the next few months to attend to family business and would return thereafter as a part-time volunteer.

Chapter Director Dell Isham summarized the year at the December 4 ExCom meeting and said he was anticipating a great year in 2005. His suggestions for the new year were as follows:

- \* Increase training and involvement in strategic planning.
- \* Establish clearer lines of authority for the chapter director.
- \* Increase fund-raising effort and budgetary support for fund-raising by the chapter director.
- \* Designate a committee responsible for grassroots lobbying.
- \* Establish a chapter membership committee and appoint a committee chair.
- \* Reestablish 6 chapter newsletters per year.
- \* Improve the website.
- \* Update office computer equipment.
- \* Adjust to decreasing support from the national organization.
- \* Participate in the first national Sierra Club Conference in September.

At the October meeting of the ExCom the committee decided to take direct financial responsibility for legal services. A contract with the South Carolina Environmental Law Project is forthcoming and will be considered by the Personnel/Steering Committee.

It was determined at the December ExCom meeting that Guild would continue as National Delegate and FitzGerald would continue as Alternate National Delegate for the next year.

The 2005 ExCom committee schedule was agreed to as follows:

January 29

April 30

July 23

October 22

December 17

A Strategic Planning retreat is set for March 5-6.

## Year in Review

(Continued from page 1.)

organization in programs called "Engaging Our Members" and "National Purpose, Local Action." Next year a national Sierra Club convention is planned and Chapter Director Dell Isham has been appointed to a committee to work out some of the delegate procedures.

## Fundraising Plan

The chapter director is expected to reduce his time on conservation issues in 2005, with the slack being taken up by volunteers. This will allow him more time to spend on fundraising. A good fundraising plan is in place and will be modified for 2005. The director recently received additional training on the club's financing and fundraising.

The fundraising highlight of the year was the Lifetime Achievement Award reception for Harry and Becca Dalton. Income from the event allowed the chapter to clear its debt and to avoid implementing some anticipated cuts.

The "March Window" remains the funding mainstay of the chapter. Contributions to the Sierra Club Foundation, however, were down in South Carolina in 2004, so a special push to raise funds in this category was emphasized the last two months of the year.

## Conservation Priorities

The ExCom voted to make air and water quality, governance issues, land-use planning, and nuclear waste legislative priorities for the 2004 Legislative Session. Legislative Day, coordinated with other environmental organizations, was a success and will be repeated this year. Environmental leaders are also coordinating their efforts with monthly Eco-Leaders Breakfast Meetings and an annual Environmental Summit. These activities help grassroots lobby volunteers and contract lobbyist Robert Barber do their job.

The Sierra Club had a successful year in the legislature by stopping numerous pieces of destructive legislation while attaining full funding for the Land Conservation Bank.

The Chapter took legal or regulatory action last year to stop the dredging of marshlands, oppose poor land-use decisions, appeal the Sumter National Forest Management Plan, oppose the re-licensing of the Barnwell Nuclear Waste Storage Facility, and object to the damming of the Tyger River. After six years of Sierra Club involvement, coordinated by Virginia Sanders, the Richland County Planning Code was adopted. Dell Isham also appeared on an NBC "Fleecing of America" segment opposing the Clyburn Connector.

## Looking Forward to 2005

The Conservation Committee and excom have identified water quality, air quality, nuclear waste, and growth management as the top issues for 2005. The financial condition of the chapter is improving, but a viable membership program still needs to be established. We are looking for a dynamic member to head the important Membership Committee.

The South Carolina Chapter of the Sierra Club is looking forward to 2005, where we will continue to educate, legislate, litigate, and if necessary agitate, on behalf of a healthier world for our families and our future. We will also continue to recreate in a responsible manner in the great outdoors.

As we enter the new-year, we are confident that we will continue to be the leading voice for the environment in South Carolina in 2005.

## Chapter Convenes Long-Range Planning Retreat

By Eric Thompson

That famous environmentalist, Yogi Berra, was once asked about his skills in navigating difficult situations. He replied, "When you find a fork in the road, take it." Sometimes, it does feel like we took one of those forks in the road and then ask ourselves later, "Why did we go this way?"

We have an opportunity to choose which is the right fork in the road for our future. On March 5 and 6, we will have a day and half planning retreat to discuss the Chapter's future directions. Greg Casini, Vice President for Organizational Effectiveness from the national Sierra Club will join the Chapter Ex-Com and group leaders for this event.

Greg and others from Sierra Club have found some common themes that determine what makes successful chapters, groups and even leaders.

~We plan ahead--strategically--to win environmental protections.

~We prioritize opportunities and threats, and identify decision-makers who can deliver or block our goals.

~We focus attention on issues through public outreach campaigns, working in coalitions, and by educating and engaging our own members.

~We match resources to priorities, and develop fundraising plans around our priorities.

~We write campaign plans with clear goals and objectives.

~We work well together as leaders and activists.

~We clearly articulate roles, responsibilities, decision-making processes up front.

~We seek consensus, give all points of view a fair hearing, and respect the decisions that are made, even when we disagree with some.

~We always communicate collegially among ourselves.

~We grant many people responsibilities and authority to use Club resources and accept accountability to the Club for their use.

~We use our individual skills to do good work, and build a rich leadership capacity through training and mutual support.

~We coordinate our work for maximum impact between groups and chapters, volunteers and staff, and local, regional and national levels of the Club.

We build relationships with people and involve them in our work.

~We organize a wide range of opportunities for people to participate in the Club, working side by side with others.

~We engage people in our work by interacting with them face to face, and building personal relationships.

~We connect with others by communicating shared values, working for real solutions, and taking responsibility for the future of the Earth.

~We regularly celebrate our accomplishments and show constant appreciation for all those who contribute.

We connect with our communities to protect the environment.

~We build relationships with other community leaders, allies and public officials who can help us win victories for the environment.

~We develop stories and messages that create public demand, hold officials accountable, and get results because they resonate with community values.

~We increase our visibility in the community by using the media to disseminate our message to broad public audiences.

~We reach out to others in the community to make sure the Club is known, liked and trusted.

We will work from these concepts to plan our future. If a leader from your group has not made arrangements with Dell to attend, please do so. We want to be sure that all of our groups are represented. It is **"OUR FUTURE"**.

## Contributors

White Oak (\$2500+)

Frances Allison Close

Magnolia (\$1000-2499)

Allyn and Ann Schneider

Long Leaf Pine (\$500-999)

Ethel Brody

Rev. and Mrs. Alanson Houghton

Steve and Maria Johnson

Malcolm Kudra

Robert and Catherine Murphy

Joseph and Joy Pinson

Sen. Arthur Ravenel

Eric Thompson

Spruce (\$250-499)

Sen. John Courson

Dell Isham

Carl and Sandra Lehner

Robert Lunz Group

Michael and Rebecca Shettleroe

Dr. Edmund and Mary Taylor

Dogwood (\$100-249)

William Barron

Dr. William Cain, Jr.

James Canup

Janet Ciegler

Dr. Kim Connolly

Beverly Diamond

Carl Ek and Dr. LaLa Steelman

Jerry and Natalina Ferlauto

Alonzo and Elizabeth Frazier

Mr. and Mrs. H.F. Gallivan III

E. Hope Gettys

Ralph and Judith Gustafson

Samuel E. Harmon

Page Harris

Grady and Honor Hartzog

Patrick Ilderton

Lisabeth Isom

Christopher J. Kempton

Ernest and Sarah Lander

Wendy Langston

Wood Lay

Harry K. McMillan

Tommie Moody

North Carolina Community Foundation, Inc.

Maryrose Randall

James and Jacquelyn Robey

Betsy Russell

Henry Smythe

Betty C. Wiggins

Bob Wislinski

Louise B. Wykes

Redbud (\$50-99)

John and Sheila Arnold

David and Nicola Jordan

Trillium (\$25-49)

Ellen Blundy

Al Graves

William A. Robinson, Jr.

Red Clover (< \$25)

James and Betty Rankin

Robert and Elizabeth Edgerton

William and Marie Fiddler

## Regional leaders meet

by Bob Morris and Deirdre MacAlpine

Forty Chapter leaders, delegates and activists from the Appalachian Region gathered in Atlanta for the Regional Conservation Committee (RCC) FutureVision meeting December 4-6 and shared election activism stories--inspiring, amusing, sad and happy--about rallies, door-to-door canvassing, and recounts. Some volunteered new ideas for spreading the message. Several expressed the importance of tying the environment to moral values.

We agreed that we have to start working towards the 2006 elections now. Regional Director Glen Besa, Dave Muhly from Southern Appalachian Highlands Ecoregion (SAHE), Environmental Justice coordinator Bill Price, and Marcia Wilkins from Atlantic Coastal Region (ACE) reported on 2004 efforts and led a discussion that emphasized the importance of being evangelists, talking to people we don't normally talk to, and building community. We need to target upcoming candidates and corporations. We have to pick our battles and marshal our resources. In the face of negative prospects on national legislation, national conservation staff advise us to play for position and formulate our strategies.

Although RCCs have been disbanded by the Board of Directors, there will be \$150,000 (Continues on page 8.)

# WHERE IN THE WORLD WILL YOU BE IN 2005?



## Imagine yourself...

advising businesspeople in the former Soviet Republic of Kyrgyzstan, teaching English in Thailand, preventing the spread of AIDS in Zambia or promoting environmental awareness in Honduras.

***Peace Corps has thousands of exciting international opportunities in a variety of work areas.***

### **Benefits of service include:**

- a modest living allowance
- intensive language, culture and technical training
- scholarship opportunities
- possible student loan deferment or cancellation
- full medical and dental coverage
- \$6,075 readjustment allowance after the close of service
- free transportation to and from the country of service



**To learn more, visit us at [www.peacecorps.gov](http://www.peacecorps.gov) or  
speak with a Peace Corps recruiter at 800.424.8580.**

# Outings and Events

## State Outings

### January

January 8: **Crowders Mountain State Park dayhike.** HK. Start the year right with a hike up our nearest peak. We'll take the Rocky Top Trail up to Crowders Mountain, drink some hot chocolate and have lunch with the buzzards. Meet at 9 a.m. at Harris Teeter on Highway 161. Jewel Reavis, (803)327-3147.

January 15: **Congaree Swamp National Park dayhike.** HK. Put on your hiking boots for a 4 1/2 mile hike in scenic Congaree Swamp on the Weston Lake loop trail. This is your chance to see the new visitor center and boardwalk. The park is in a flood plain with huge trees and lots of birds. The trail is mostly flat and may be slippery. Wear sturdy boots. Bring lunch, beverage and rain gear. Rated moderate. Faye Metz, (803)366-8533.

January 15: **Spoonauger Falls and King Creek Falls hike.** FH. Two short hikes beginning at the Burrell's Ford parking lot near the Chattooga River. First will be a half-mile jaunt upriver to Spoonauger Falls, a lovely, 50 foot cascade that tumbles down a natural rock staircase. Backtracking, we will head downstream a half mile through verdant hemlock and rhododendron forests to King Creek Falls. This waterfall is a bit higher (70 feet) and has more water, that comes roaring off a ledge and then crashes down several large stair-step rock ledges. Lunch at the Burrell's Ford campground. Rated moderate; total distance 2.5 miles. Harold Christopher, (964)985-1784.

January 22: **Sea Pines Forest Preserve, Hilton Head, hike and picnic.** CA. This is a 2- or 4-mile hike (your choice) with a picnic by the lake. Bring plenty of water, warm clothes, sturdy shoes, and a bag lunch. Alex Skevington, alexskev@aol.com.

January 22: **Huntington Beach State Park birding.** LZ. We want to see loons, purple sandpipers and gannets as well as Bonaparte's gulls and a host of other wintering birds. If there is interest we will car camp Saturday night. This is a rain or shine trip. Starr Hazard, (843)881-8902 or hazardes@bellsouth.net.

January 23: **ACE Basin National Wildlife Refuge (Grove Plantation) hike.** LZ. Hike through the forests and marshes with a stop at two Civil War earthen fortifications along the way. Bill Turner, (843)571-3503.

January 29: **Pinnacle Mountain, Table Rock loop hike.** BR. Very strenuous hike, close to home, with spectacular views. Distance

approximately 11 miles, with a cumulative elevation gain of over 3000 feet. Numbers limited. Chris Lane, (864)467-9144(h), 467-0608(w).

January 29: **Congaree National Park hike.** BR. This old growth forest in a floodplain never was a swamp and has finally won the designation as the newest and 57th national park and the state's first national park. Some of the hike in this lovely area takes place on boardwalks. Rated moderate. Hike goes rain or shine. Bring lunch. Ed Wilde, (864)487-3959 or Chip Green, (864)579-0164.

### February

February 5: **Santee Coastal Reserve hiking and birding.** LZ. This excursion to a jewel of the Lowcountry will provide about 8 miles of flat walking through swamps, woodlands and rice dikes of the Reserve. We hope to see lingering waterfowl, wood storks, eagles, big alligators and possibly early warming snakes. We will go rain or shine. Starr Hazard, (843)81-8902 or hazardes@bellsouth.net.

February 27: **Santee Delta Wildlife Management Area walk.** LZ. Half-day walk on the dikes of the largest river delta on the east coast. Last year, multitudes of ducks, wading birds, and raptors were spotted. After the hike we'll visit historic Hampton Plantation State Park where we'll do another short walk and then stop at St. James Santee Parish Church, one of the oldest churches in the region. Bill Turner, (943)571-3503.

### March

March 5-6: **Overnight canoe/kayak camping trip on a lowcountry stream.** LZ. Location to be determined based on water levels. Bill Turner, (843)571-3503.

### April

April 9: **Santee River canoe/kayak.** LZ. A day trip of epic proportions, encompassing three narrow creeks, a wide river, and a Civil War fortification. Bill Turner, (843)571-3503.

**Group designations: BA = Bachman; BR = Bartram; CA = Cathcart; FH = Foothills; HK = Henry's Knob; LZ = Lunz; PD = Pee Dee; SF = Swamp Fox; SR = Savannah River; WY = Winyah**

## Regional Leaders Meet

(Continued from page 6.)

in funds available to do regional conservation work countrywide. Some fund-raising is likely to be needed and Besa pledged his assistance. A framework was agreed upon that retains the Regional Vice President position and empowers it to coordinate with Chapters on forming "tiger teams" to address cross-jurisdictional issues. First a Power Team will be formed with participating Chapters providing at least one volunteer to address energy and climate change issues. Next a River Team will follow the template of the Power Team to address water issues. Forest and Coastal issues will be handled by SAHE and ACE. Contact your Conservation Chairs to see if a regional approach will help your projects.

ARCC Chair Bob Morris led the group in an exercise that is designed to help people see the expected climate and related changes expected by 2054 and understand the impacts on their homes and children's lives. It was agreed that this would be developed into a discussion guide for house meetings under the Engaging Our Members program. Contact Bob at arccbob@earthlink.net if you are interested.

Guest speakers Ken Smokoska and Paul Fenn from the California Regional Energy Committee got the group excited about Community Choice Aggregate legislation, Clean Energy Vehicles, Cali-

fornia Interfaith Power and Light, the Apollo Project, and Energy Audits to get people, businesses, and corporations to switch to compact fluorescents. The key to reducing or mitigating the devastating impact of climate change is to quickly move to reduce our greenhouse gas emissions. The Appalachian Region activists determined to work with Ken and Paul to export the California initiatives to this region.

A key item of discussion was the need for the Chapters to provide leadership for the Council of Club Leaders, the Conservation Governance Committee and the Board of Directors in adopting a clear, concise, comprehensive and comprehensible energy statement. The national Global Warming and Energy Committee drafted an energy vision statement this year, but all of the national bodies have asked for Chapters to provide them with direction before they will adopt the statement for posting on the Sierra Club web site. Copies of the draft statement are available from arccbob@earthlink.net.

The highlight of the weekend was recognizing 12 great activists selected by their Chapters with regional Appreciation for Excellent Environmental Activism Awards. They are: Jason Broehm (DC), Til Purnell (DE), Jim Callison (GA), Julie Stuart (GA), Bob DeGroot (MD), Bonnie Bick (MD), D. Dan Boone (MD), Jordan Holtam (NC), Harvard Ayers (NC), Dean Whitworth (TN), Tyla Matteson (VA), and Jim Kotcon (WV).